

K38P



AERIAL PLATFORM MOUNTED ON A 3.5t VAN



Working Height



Contact us:
CPL
38b Telford Way Ind. Est.
Kettering, Northamptonshire
NN16 8UN. England
Tel. +44 (0)1536 529876
www.cpl-ltd.com

 **GREEN PACK
TECHNOLOGY**

Demonstrations upon request

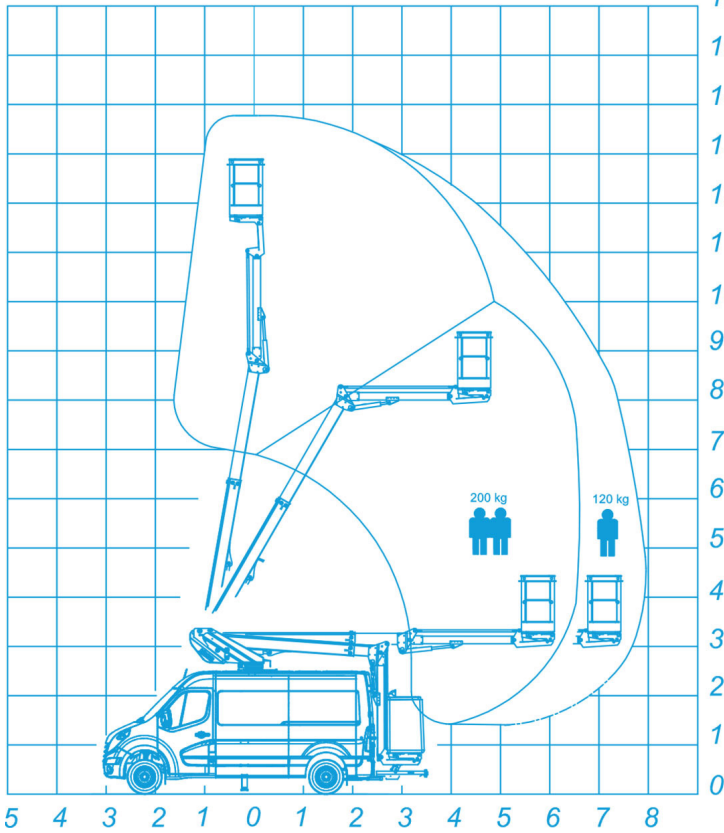


K38P TELESCOPIC AERIAL PLATFORM

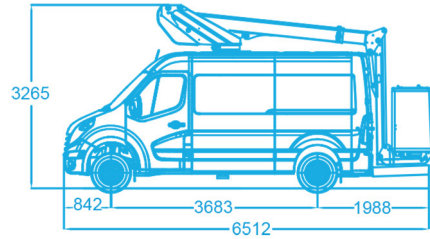
mounted on a 3.5t cutaway or full van



WORKING DIAGRAM



AERIAL PLATFORM DRAWING



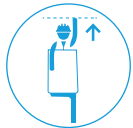
STANDARD SPECIFICATIONS

- Type Approved conversion
- Independent emergency electric pump
- Fully proportional controls
- 1Kv boom and basket protection
- Manufacturer approved conversion
- Two A Frame outriggers

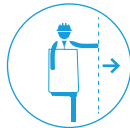
OPTIONS

- Signalling Devices (Roof beacons, Full beacon sets)
- Custom poly or ply lining
- Reversing camera
- Chapter 8 and Custom graphics fitted
- Green Pack: the platform can be operated with the van engine turned off

For vehicle options, please contact us before ordering.



13.8m



8.0m
6.55m



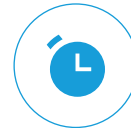
360°
Non-Continuous



120kg/
200kg



1100 x 660 x 1360mm



Hour
counter



3.5 T



POSSIBLE TYPES OF VEHICLES

- Renault Master L2H2

Please contact us for a full list of vehicle options.