

# CPL 20 METRE



## AERIAL PLATFORM MOUNTED ON A 3.5t CHASSIS



Working Height



Contact us:  
CPL  
38b Telford Way Ind. Est.  
Kettering, Northamptonshire  
NN16 8UN. England  
Tel. +44 (0)1536 529876  
[www.cpl-ltd.com](http://www.cpl-ltd.com)

## CPL 20 METRE

Demonstrations upon request

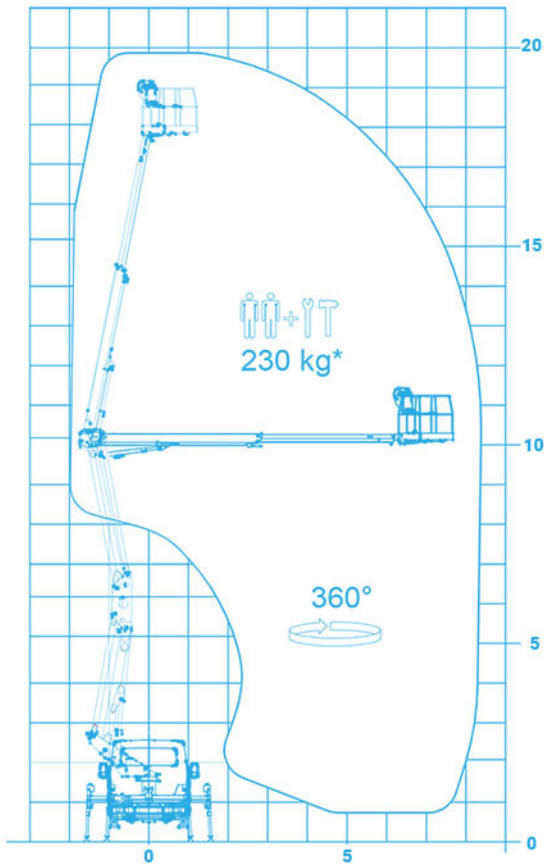


# CPL20 ARTICULATED AERIAL PLATFORM

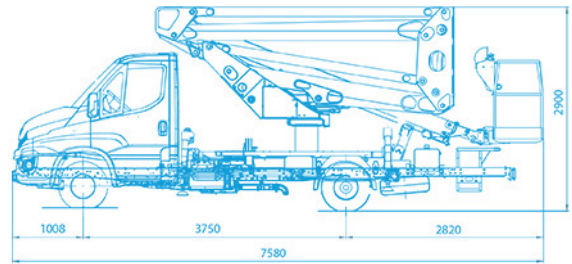
mounted on a 3.5t chassis



## WORKING DIAGRAM



## AERIAL PLATFORM DRAWING



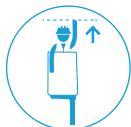
## STANDARD SPECIFICATIONS

- Front attached Basket
- Aluminium Bakset
- Vertikal Stabilisation
- Electro-Hydraulic Controls
- Rated at 3.5t

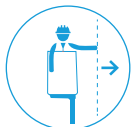
## OPTIONS

- Signalling Devices (Roof beacons, Full beacon sets)
- 110V electric socket in the basket
- Reversing camera
- Chapter 8 graphics

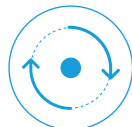
*For more platform options, please contact us before ordering.*



19.9m



8.4m



360°



230kg



4 outriggers



1400x710x1100mm



Hour counter



3.5T

## POSSIBLE TYPES OF VEHICLES

Iveco Daily Chassis

*Please contact us for a full list of vehicle options.*