

With Us, You can

**HIGH
GREEN
SAFE**



	25 m
	13 m
	250 kg
	Bi-energy Eco Hybrid
	Crawlers Wheels





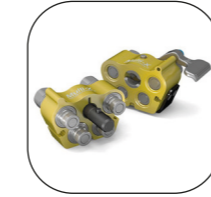
STANDARD EQUIPMENT

- Available power options: Bi-energy (Diesel + AC), Eco (AC+Battery), Hybrid (Diesel+AC+Battery)
- Hydraulic steering and transmission with 2 speeds on rubber tracks at variable width with hydraulically variable
- Independent outriggers rotating on 2 different positions
- Automatic set-up with self-levelling
- Turntable rotation at 660°
- CANBUS electronics
- Steel made telescopic boom + fixed jib
- Hydraulic and electric lines inside the boom
- Removable aluminium alloy aerial cage 180x70x110 cm, with hydraulic rotation 90° + 80°
- "Area manager" limiting device for safe working load 120 and 250 kg
- Load sensor on the cage
- Cable control at the ground + electric control at the cage
- 230VAC electric plug on the cage
- PalSystem with touchscreen monitor for diagnostics and monitoring of operating parameters
- Standard colors: chassis and stabilizers red RAL 3000 - turret and boom white RAL 9003
- CE Mark homologation certificates, manuals, stickers and spares book in English language



HYDRAULIC WINCH 500 KG

The winch, replacing the basket, allows to transform the Spider lift in Spider crane with a maximum lifting capacity of 500 kg. It is supplied with a special mobile support for the basket disassembled.



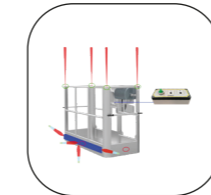
QUICK PIPES COUPLING KIT FOR HYDRAULIC WINCH 500 KG

Coupling system and quick release of the hydraulic winch to accelerate and speed up the replacement between basket and winch, reducing significantly the machine downtime.



PROTECTION OF PRUNERS

Covers kit in iron for delicate parts of the machine such as cylinders stems, valves and reels to protect against branches or other materials falling from above.



BASKET ANTI-COLLISION KIT

The laser sensors are positioned at the four corners of the basket and monitor the distance between the operator and any vertical obstacles. Ultrasonic sensors check the presence of any obstacles around the perimeter.



NON-MARKING TRACKS

white rubber, ideal to operate indoor and/ or on delicate floors



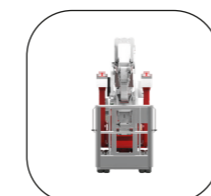
PEDAL TO THE CAGE

Safety pedal to operate the movements from the cage.



ADDITIONAL AIR/WATER PIPES

Extra-large diameter compressed air/water pipe to the basket.



CAGE 70x70x110

One-man aluminum cage size 70x70 cm, suitable for work in particularly narrow spaces.



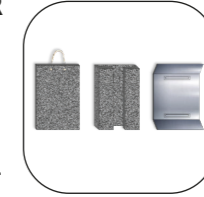
TOUCHSCREEN MONITOR IN THE CAGE

Installed on the cage control panel, providing the operator with all detailed and salient information of the aerial working platform he needs during aerial work.



KIT PALCONNECT

Remote connection service with the aerial platform that allows the user to monitor the key parameters of use of the machine and intervene with some of them.



PADS FOR OUTRIGGERS

Different type of pads to distribute the load of the stabilizers on the ground and have greater stability of the machine.



CUSTOMIZED COLOURS

Possibility to customize the colours of the tracked lift with different RAL according to the client's corporate livery



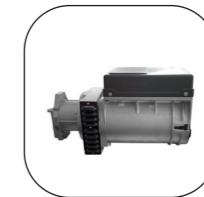
LED LIGHT

One or more additional led headlights installed on the basket or on the boom.



RADIO CONTROL

Circuit of radio-wave driven controls, for ground operation even at a great distance.



ELECTRIC GENERATOR

230VCA single-phase, powered by the diesel engine, connected to an electrical socket in the cage, for the use of electrical tools during aerial working



INTERCOM CIRCUIT

electronic device for voice communication between the operator at height in the basket and the operator on the ground



ANEMOMETER

device for measuring the wind, with an acoustic warning of the wind max speed allowed for aerial working




RETURN TO HOME FUNCTION

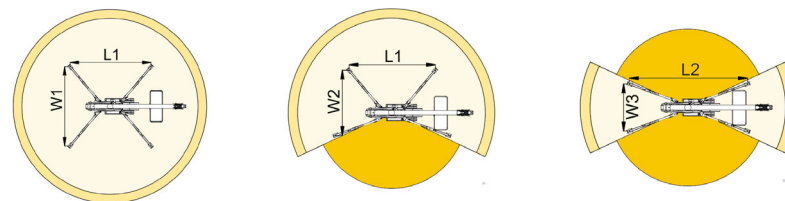
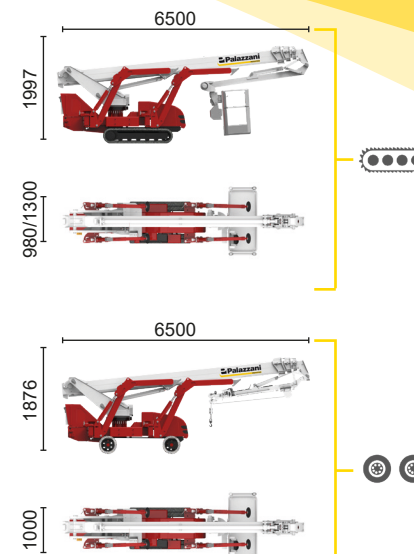
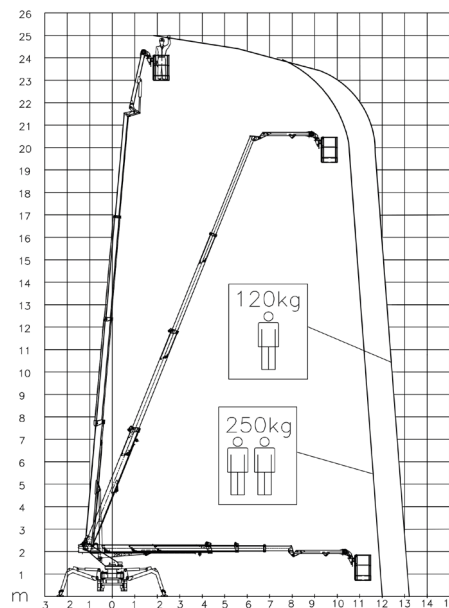
The "return to home" function allows to automatically return to the transport position by pressing a button on the controls.



BI-ENERGY



 Diesel
14,7 kW

 Single-phase
Electric motor
230VAC - 2,2 kW



12 m	13 m	7,5 m	L1	L2	W1	W2	W3
250 kg	120 kg	250/120 kg	4971 mm	6542 mm	4853 mm	3732 mm	2610 mm



TSJ 25/C		25 m	13 m	250 kg	660°	180x70 cm	90°+80°	2,61-4,85 m	32%	36%	1 km/h	3950 kg	26 kN	1,64 kN/m ²	3,38 kN/m ²
TSJ 25/R		25 m	13 m	250 kg	660°	180x70 cm	90°+80°	2,61-4,85 m	32%	19%	1 km/h	3950 kg	26 kN	1,64 kN/m ²	3,38 kN/m ²

Available power options:

BI-ENERGY (DIESEL+AC)

ECO (AC+BATTERY)

HYBRID (DIESEL+AC+BATTERY)

Characteristics and technical data are informative only and subjected to change without notice.

Palazzani Industrie S.p.A.

Via del Pavione, 4 - 25050 - Paderno F.C. (BS) - Italy

Tel. (+39) 0306857073

info@palazzani.it

www.palazzani.it





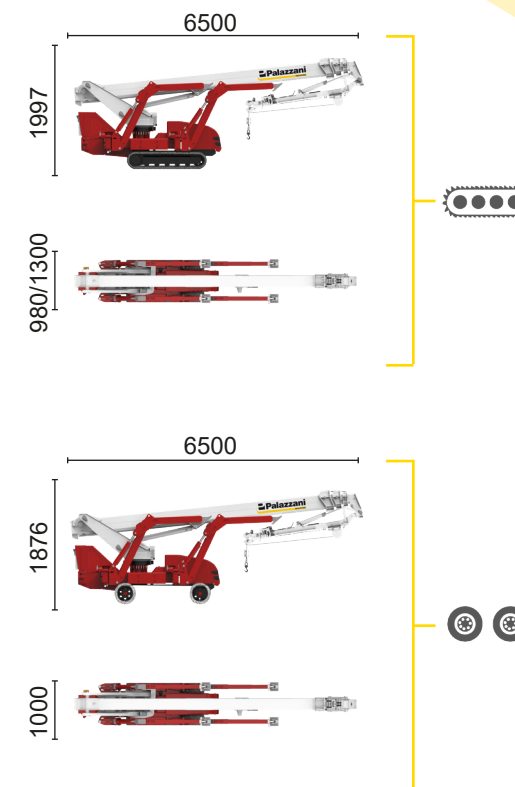
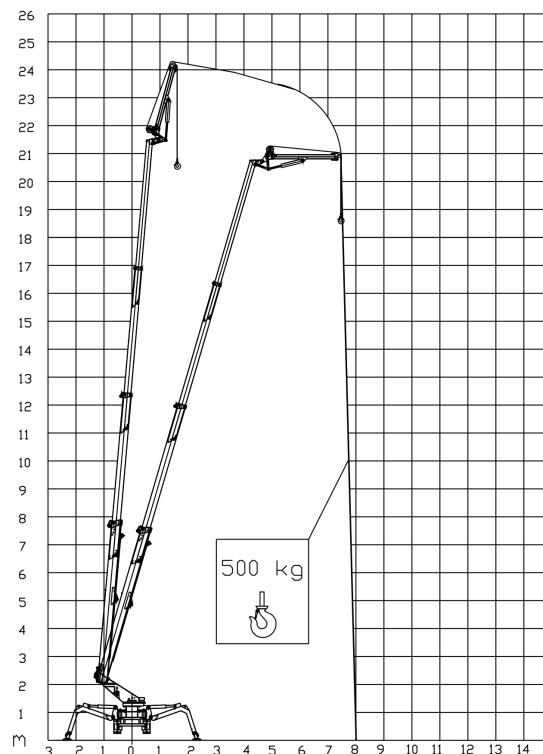
BI-ENERGY



Diesel
14,7 kW



Single-phase
Electric motor
230VAC - 2,2 kW



TSJ 25/C		23,5 m	8,5 m	500 kg	660°	180x70 cm	90°+80°	2,61-4,85 m	32%	36%	1 km/h	3950 kg	26 kN	1,64 kN/m ²	3,38 kN/m ²
TSJ 25/R		23,5 m	8,5 m	500 kg	660°	180x70 cm	90°+80°	2,61-4,85 m	32%	19%	1 km/h	3950 kg	26 kN	1,64 kN/m ²	3,38 kN/m ²

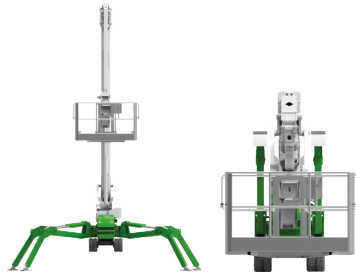
Available power options:

- BI-ENERGY** (DIESEL+AC)
- ECO** (AC+BATTERY)
- HYBRID** (DIESEL+AC+BATTERY)


Characteristics and technical data are informative only and subjected to change without notice.


Palazzani Industrie S.p.A.
Via del Pavione, 4 - 25050 - Paderno F.C. (BS) - Italy
Tel. (+39) 0306857073
info@palazzani.it
www.palazzani.it

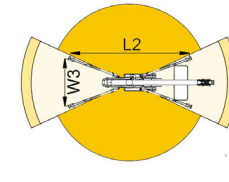
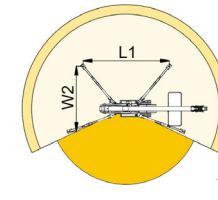
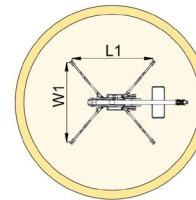
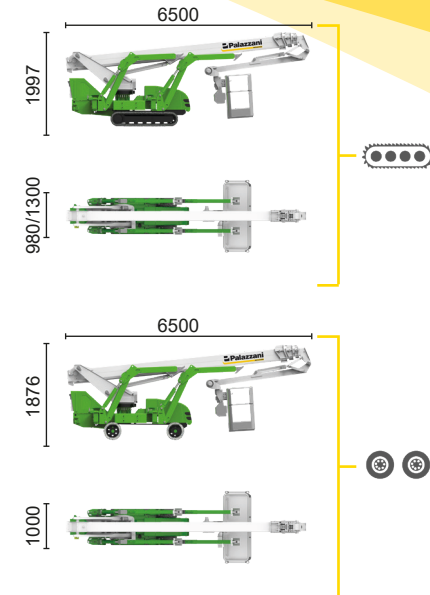
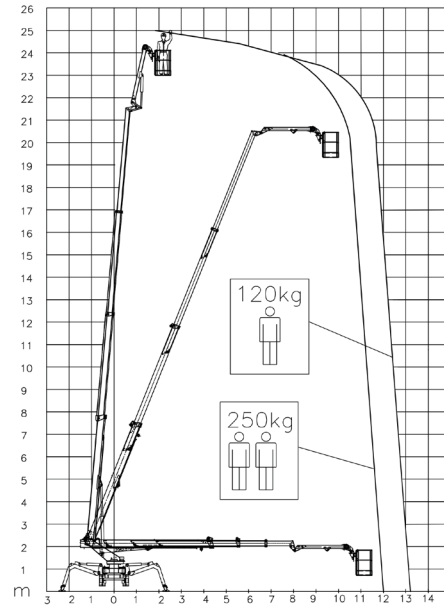




ECO



 Single-phase Electric motor

 Lithium iron phosphate battery LiFePO4




12 m	13 m	7,5 m	L1	L2	W1	W2	W3
250 kg	120 kg	250/120 kg	4971 mm	6542 mm	4853 mm	3732 mm	2610 mm



TSJ 25/C		25 m	13 m	250 kg	660°	180x70 cm	90°+80°	2,61-4,85 m	32%	36%	1 km/h	3950 kg	26 kN	1,64 kN/m2	3,38 kN/m2
TSJ 25/R		25 m	13 m	250 kg	660°	180x70 cm	90°+80°	2,61-4,85 m	32%	19%	1 km/h	3950 kg	26 kN	1,64 kN/m2	3,38 kN/m2

Available power options:

 **BI-ENERGY** (DIESEL+AC)

 **ECO** (AC+BATTERY)

 **HYBRID** (DIESEL+AC+BATTERY)

Characteristics and technical data are informative only and subjected to change without notice.

Palazzani Industrie S.p.A.

Via del Pavione, 4 - 25050 - Paderno F.C. (BS) - Italy

Tel. (+39) 0306857073


info@palazzani.it


www.palazzani.it

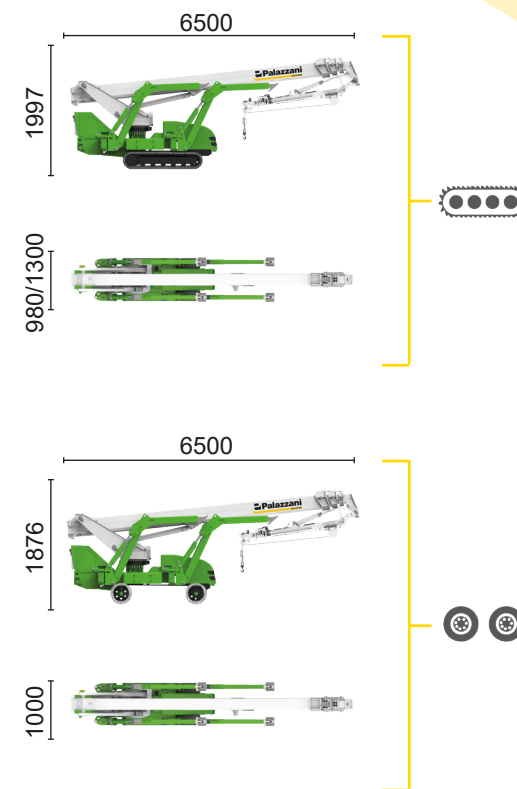
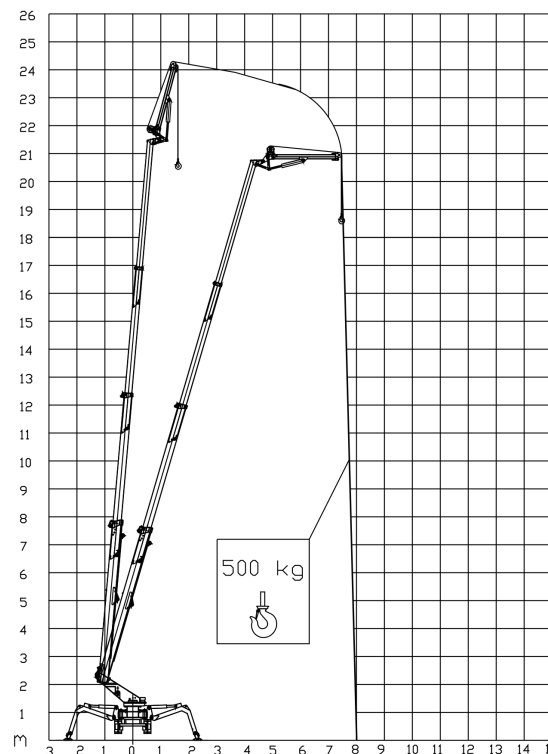






ECO

 Single-phase
Electric motor

 Lithium iron
phosphate battery
LiFePO4



TSJ 25/C		23,5 m	8,5 m	500 kg	660°	180x70 cm	90°+80°	2,61-4,85 m	32%	36%	1 km/h	3950 kg	26 kN	1,64 kN/m ²	3,38 kN/m ²
TSJ 25/R		23,5 m	8,5 m	500 kg	660°	180x70 cm	90°+80°	2,61-4,85 m	32%	19%	1 km/h	3950 kg	26 kN	1,64 kN/m ²	3,38 kN/m ²

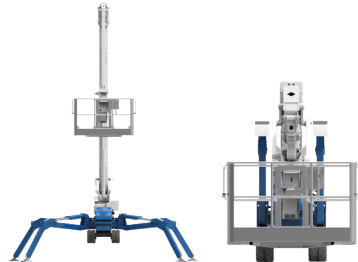
Available power options:

- BI-ENERGY** (DIESEL+AC)
- ECO** (AC+BATTERY)
- HYBRID** (DIESEL+AC+BATTERY)




Characteristics and technical data are informative only and subjected to change without notice.

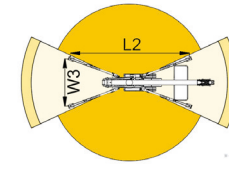
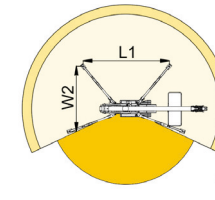
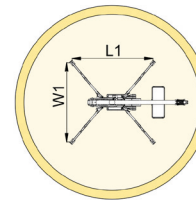
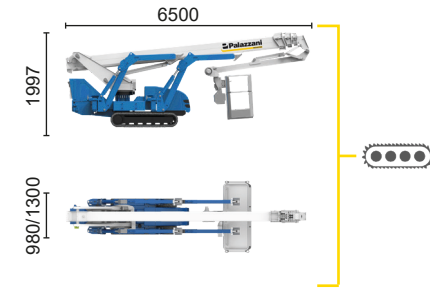
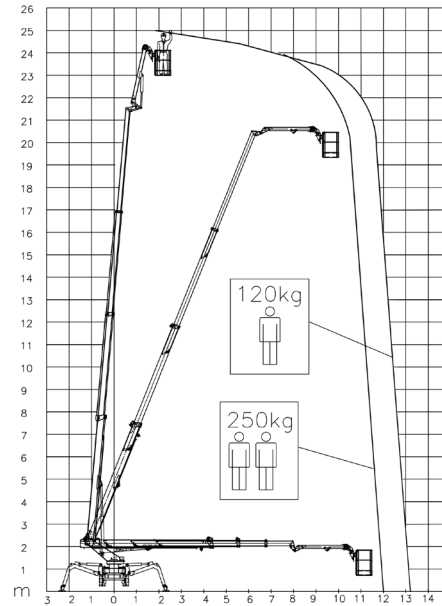
Palazzani Industrie S.p.A.
Via del Pavione, 4 - 25050 - Paderno F.C. (BS) - Italy
Tel. (+39) 0306857073
info@palazzani.it
www.palazzani.it





HYBRID²

-  Diesel
14,7 kW
-  Single-phase
Electric motor
230VAC - 5,5kW
-  Lithium iron
phosphate battery
LiFePO4
48V - 210Ah






12 m	13 m	7,5 m	L1	L2	W1	W2	W3
250 kg	120 kg	250/120 kg	4971 mm	6542 mm	4853 mm	3732 mm	2610 mm



TSJ 25/C  25 m 13 m 250 kg 660° 180x70 cm 90°+80° 2,61-4,85 m 32% 36% 1,2 km/h 4335 kg 26 kN 1,8 kN/m² 3,71 kN/m²

Available power options:

-  **BI-ENERGY** (DIESEL+AC)
-  **ECO** (AC+BATTERY)
-  **HYBRID²** (DIESEL+AC+BATTERY)

Characteristics and technical data are informative only and subjected to change without notice.




Palazzani Industrie S.p.A.
Via del Pavione, 4 - 25050 - Paderno F.C. (BS) - Italy
Tel. (+39) 0306857073
info@palazzani.it
www.palazzani.it

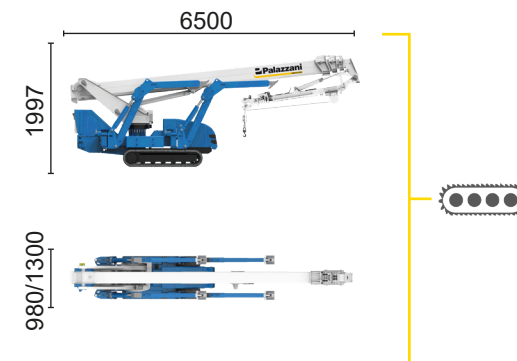
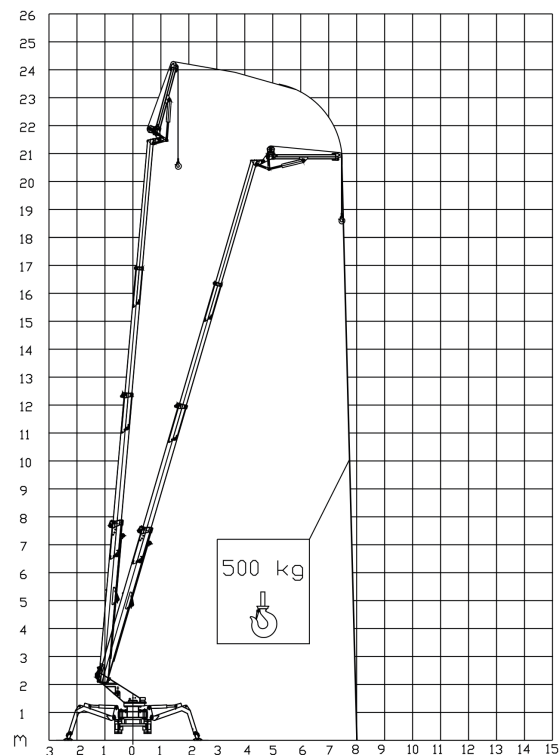


NC 810 A 22



HYBRID²

-  Diesel
14,7 kW
-  Single-phase
Electric motor
230VAC - 5,5kW
-  Lithium iron
phosphate battery
LiFePO4
48V - 210Ah



TSJ 25/C



23,5 m



8,5 m



500 kg



660°



180x70 cm



90°+80°



2,61-4,85 m



32%



36%



1,2 km/h



4335 kg



26 kN



1,8 kN/m²



3,71 kN/m²



Available power options:

BI-ENERGY (DIESEL+AC)

ECO (AC+BATTERY)

HYBRID² (DIESEL+AC+BATTERY)

Characteristics and technical data are informative only and subjected to change without notice.

Palazzani Industrie S.p.A.

Via del Pavione, 4 - 25050 - Paderno F.C. (BS) - Italy

Tel. (+39) 0306857073

info@palazzani.it

www.palazzani.it

