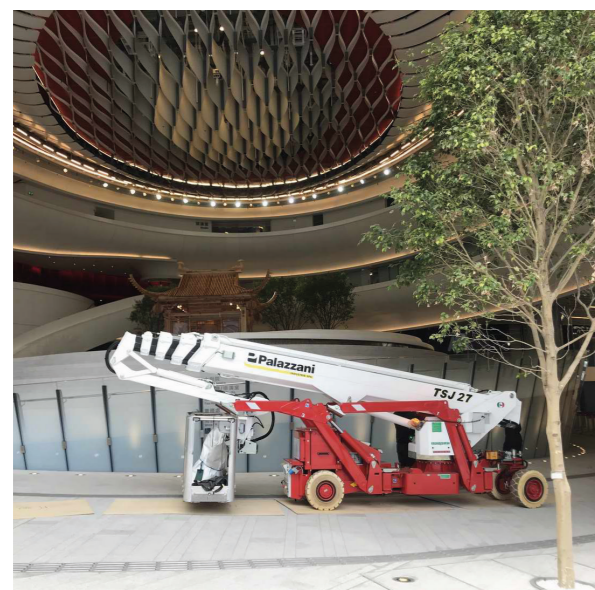


With Us, You can

**HIGH
GREEN
SAFE**



	27 m
	13,2 m
	330 kg*
	Bi-energy Eco Hybrid
	Crawlers Wheels



SPIDER LIFT



STANDARD EQUIPMENT

- Available power options: Bi-energy (Diesel + AC), Eco (AC+Battery), Hybrid (Diesel+AC+Battery)
- Hydraulic steering and transmission on rubber tracks at variable width
- Independent outriggers rotating on 2 different positions
- Automatic set-up with self-levelling
- Turntable rotation at 660°
- CANBUS electronics
- Steel made telescopic boom + fixed jib
- Hydraulic and electric lines inside the boom
- Removable aluminium alloy aerial cage 180x70x110 cm, with hydraulic rotation 90° + 80°
- "Area manager" limiting device for safe working load 120 and 230 kg
- Load sensor on the cage
- Cable control at the ground + electric control at the cage
- 230VAC electric plug on the cage
- PalSystem with touchscreen monitor for diagnostics and monitoring of operating parameters
- CE Mark homologation certificates, manuals, stickers and spares book in English language

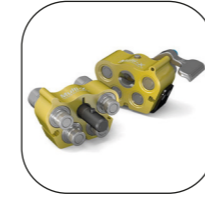


OPTIONAL



HYDRAULIC WINCH 500 KG

The winch, replacing the basket, allows to transform the Spider lift in Spider crane with a maximum lifting capacity of 500 kg. It is supplied with a special mobile support for the basket disassembled.



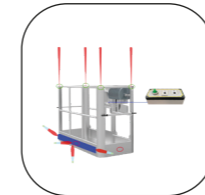
QUICK PIPES COUPLING KIT FOR HYDRAULIC WINCH 500 KG

Coupling system and quick release of the hydraulic winch to accelerate and speed up the replacement between basket and winch, reducing significantly the machine downtime.



PROTECTION OF PRUNERS

Covers kit in iron for delicate parts of the machine such as cylinders stems, valves and reels to protect against branches or other materials falling from above.



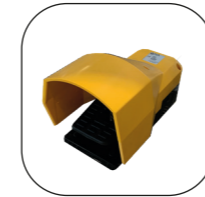
BASKET ANTI-COLLISION KIT

The laser sensors are positioned at the four corners of the basket and monitor the distance between the operator and any vertical obstacles. Ultrasonic sensors check the presence of any obstacles around the perimeter.



NON-MARKING TRACKS

white rubber, ideal to operate indoor and/ or on delicate floors



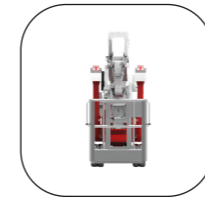
PEDAL TO THE CAGE

Safety pedal to operate the movements from the cage.



ADDITIONAL AIR/WATER PIPES

Extra-large diameter compressed air/water pipe to the basket.



CAGE 70x70x110

One-man aluminum cage size 70x70 cm, suitable for work in particularly narrow spaces.



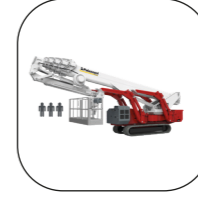
TOUCHSCREEN MONITOR IN THE CAGE

Installed on the cage control panel, providing the operator with all detailed and salient information of the aerial working platform he needs during aerial work.



KIT PALCONNECT

Remote connection service with the aerial platform that allows the user to monitor the key parameters of use of the machine and intervene with some of them.



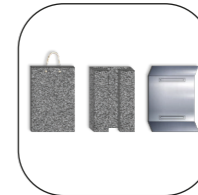
3rd WORKING AREA

Work area with an increased load, to have the possibility to work with 330 kg of load in the basket



CUSTOMIZED COLOURS

Possibility to customize the colours of the tracked lift with different RAL according to the client's corporate livery



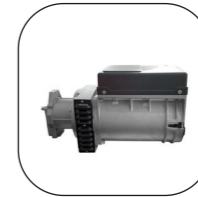
PADS FOR OUTRIGGERS

Different type of pads to distribute the load of the stabilizers on the ground and have greater stability of the machine.



RADIO CONTROL

Circuit of radio-wave driven controls, for ground operation even at a great distance.



ELECTRIC GENERATOR

230VCA single-phase, powered by the diesel engine, connected to an electrical socket in the cage, for the use of electrical tools during aerial working



INTERCOM CIRCUIT

electronic device for voice communication between the operator at height in the basket and the operator on the ground



ANEMOMETER

device for measuring the wind, with an acoustic warning of the wind max speed allowed for aerial working




RETURN TO HOME FUNCTION

The "return to home" function allows to automatically return to the transport position by pressing a button on the controls.



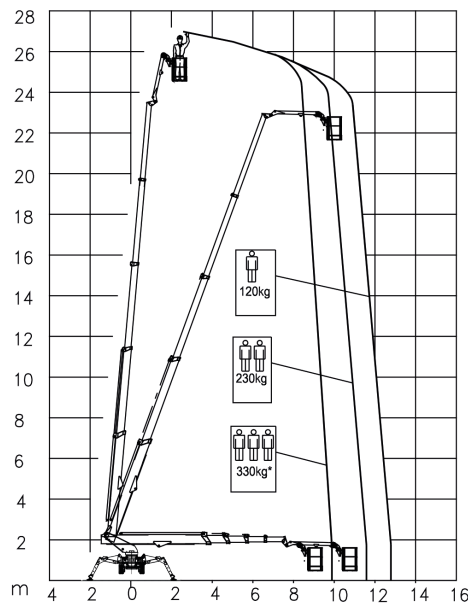
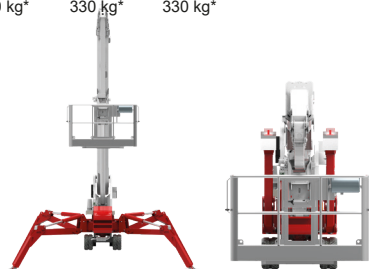
BI-ENERGY

 Diesel
14,7 kW

 Single-phase
Electric motor
230VAC - 2,2 kW

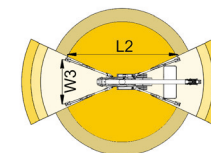
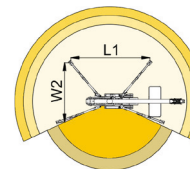
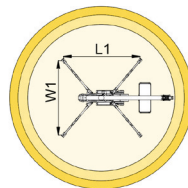
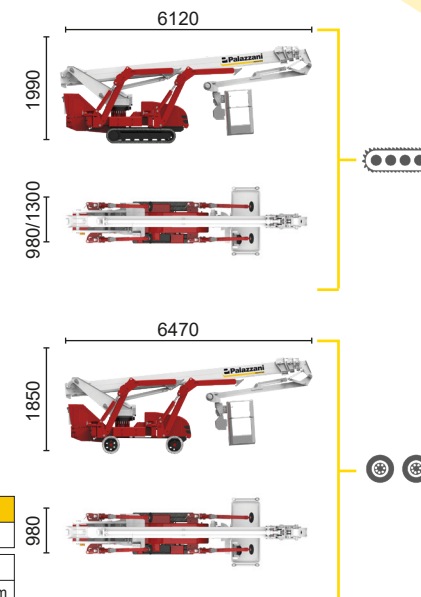




330 kg* 330 kg* 330 kg*



*optional

9,9 m	11,6 m	12,8 m	7,3 m	12,2 m	13,2 m	7,3 m			
330 kg*	230 kg	120 kg	120/230 kg	230 kg	120 kg	230/120 kg			
L1	L2	W1	W2	W3	L1	L2	W1	W2	W3
4927 mm	6436 mm	4791 mm	3828 mm	2865 mm	4927 mm	6436 mm	4791 mm	3828 mm	2865 mm



TSJ 27/C		27 m	13,2 m	330 kg*	660°	180x70 cm	90°+80°	2,86-4,79 m	44%	42%	1,2 km/h	4455 kg	29 kN	1,94 kN/m2	4,16 kN/m2
TSJ 27/R		27 m	13,2 m	330 kg*	660°	180x70 cm	90°+80°	2,86-4,79 m	44%	29%	1,7 km/h	4700 kg	29 kN	1,99 kN/m2	4,04 kN/m2

Available power options:

BI-ENERGY (DIESEL+AC)

ECO (AC+BATTERY)

HYBRID (DIESEL+AC+BATTERY)

Characteristics and technical data are informative only and subjected to change without notice.

Palazzani Industrie S.p.A.

Via del Pavione, 4 - 25050 - Paderno F.C. (BS) - Italy

Tel. (+39) 0306857073

info@palazzani.it

www.palazzani.it





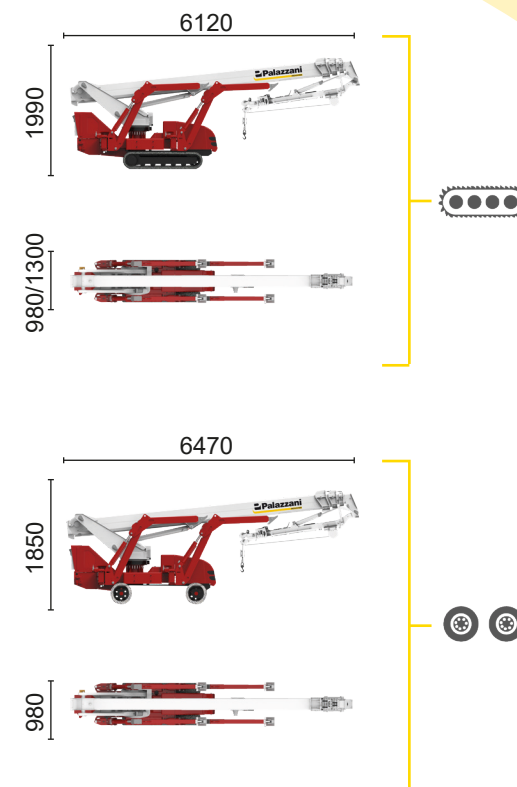
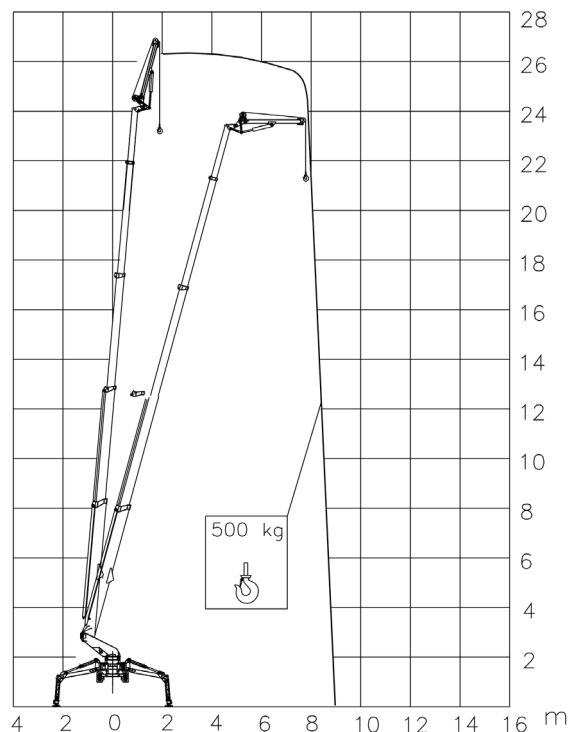
BI-ENERGY



Diesel
14,7 kW



Single-phase
Electric motor
230VAC - 2,2 kW



TSJ 27/C		25,5 m	9 m	500 kg	660°	180x70 cm	90°+80°	2,86-4,79 m	44%	42%	1,2 km/h	4455 kg	29 kN	1,94 kN/m ²	4,16 kN/m ²
TSJ 27/R		25,5 m	9 m	500 kg	660°	180x70 cm	90°+80°	2,86-4,79 m	44%	29%	1,7 km/h	4700 kg	29 kN	1,99 kN/m ²	4,04 kN/m ²

Available power options:

- BI-ENERGY** (DIESEL+AC)
- ECO** (AC+BATTERY)
- HYBRID** (DIESEL+AC+BATTERY)


Characteristics and technical data are informative only and subjected to change without notice.


Palazzani Industrie S.p.A.
Via del Pavione, 4 - 25050 - Paderno F.C. (BS) - Italy
Tel. (+39) 0306857073
info@palazzani.it
www.palazzani.it

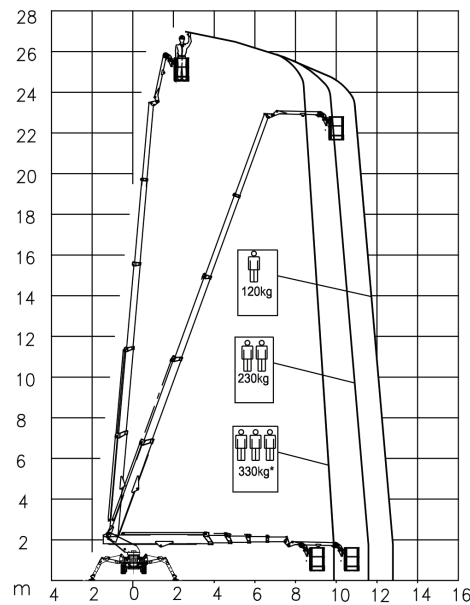




ECO

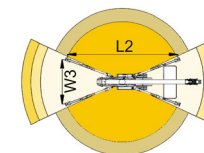
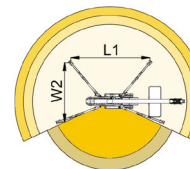
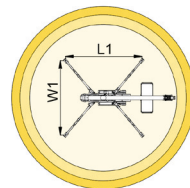
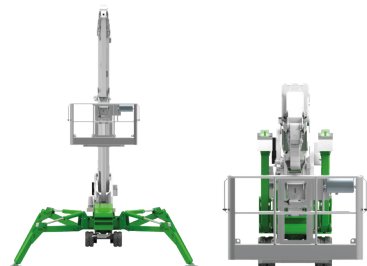
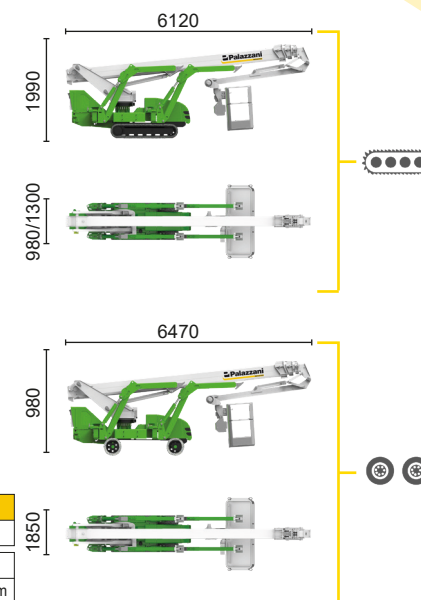
 Single-phase Electric motor



 Lithium iron phosphate battery LiFePO4



*optional

9,9 m	11,6 m	12,8 m	7,3 m	12,2 m	13,2 m	7,3 m			
330 kg*	230 kg	120 kg	120/230 kg	230 kg	120 kg	230/120 kg			
L1	L2	W1	W2	W3	L1	L2	W1	W2	W3
4927 mm	6436 mm	4791 mm	3828 mm	2865 mm	4927 mm	6436 mm	4791 mm	3828 mm	2865 mm



TSJ 27/C		27 m	13,2 m	330 kg*	660°	180x70 cm	90°+80°	2,86-4,79 m	44%	42%	1,2 km/h	4455 kg	29 kN	1,94 kN/m2	4,16 kN/m2
TSJ 27/R		27 m	13,2 m	330 kg*	660°	180x70 cm	90°+80°	2,86-4,79 m	44%	29%	1,2 km/h	4700 kg	29 kN	1,99 kN/m2	4,04 kN/m2

Available power options:

BI-ENERGY (DIESEL+AC)

ECO (AC+BATTERY)

HYBRID (DIESEL+AC+BATTERY)

Characteristics and technical data are informative only and subjected to change without notice.

Palazzani Industrie S.p.A.

Via del Pavione, 4 - 25050 - Paderno F.C. (BS) - Italy

Tel. (+39) 0306857073


info@palazzani.it


www.palazzani.it

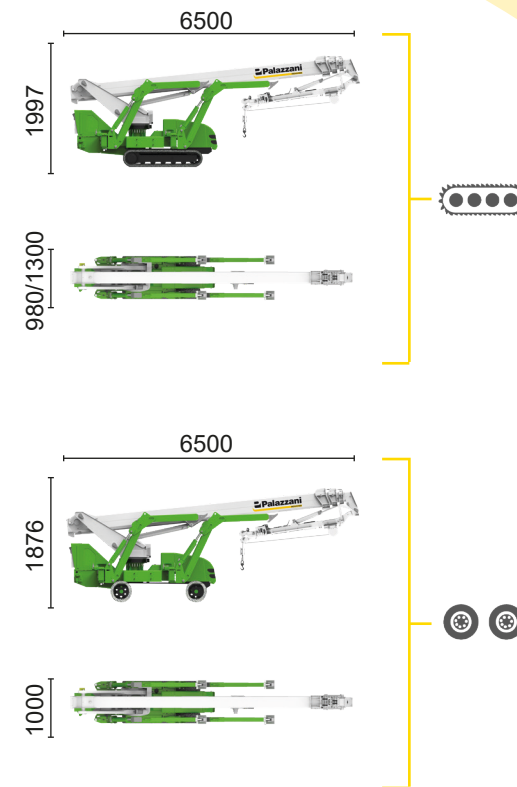
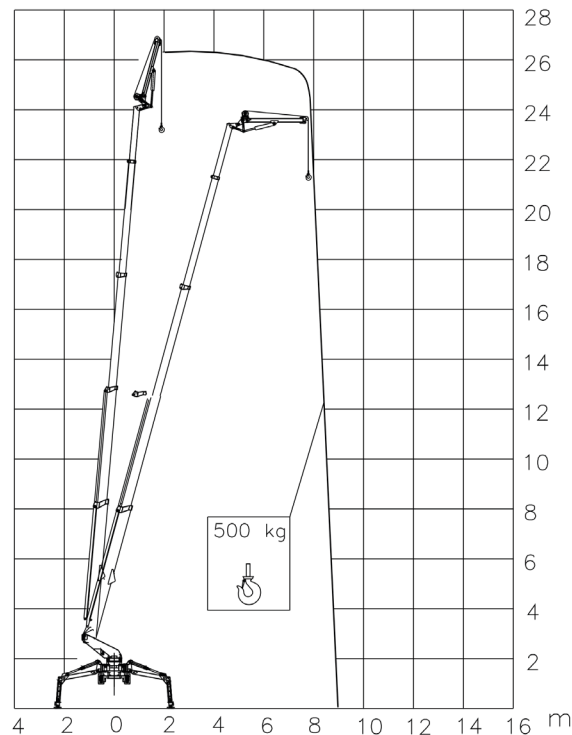






ECO

 Single-phase Electric motor

 Lithium iron phosphate battery LiFePO4



TSJ 27/C		25,5 m	9 m	500 kg	660°	180x70 cm	90°+80°	2,86-4,79 m	44%	42%	1,2 km/h	4455 kg	29 kN	1,94 kN/m ²	4,16 kN/m ²
TSJ 27/R		25,5 m	9 m	500 kg	660°	180x70 cm	90°+80°	2,86-4,79 m	44%	29%	1,2 km/h	4700 kg	29 kN	1,99 kN/m ²	4,04 kN/m ²

Available power options:



- BI-ENERGY** (DIESEL+AC)
- ECO** (AC+BATTERY)
- HYBRID** (DIESEL+AC+BATTERY)

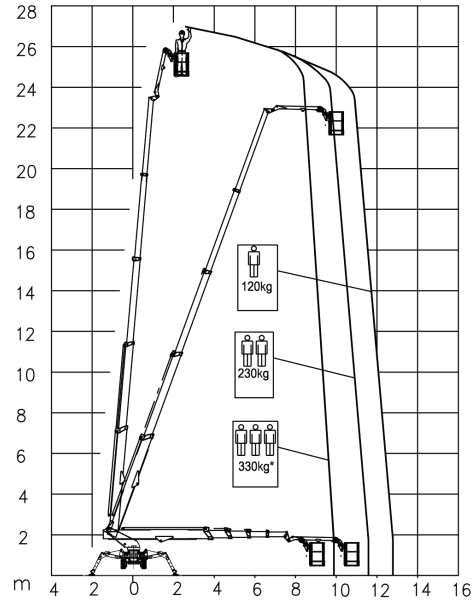
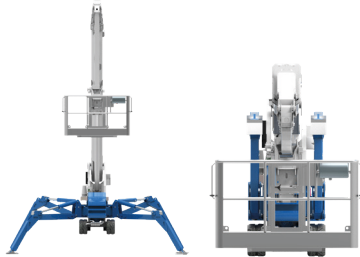
Characteristics and technical data are informative only and subjected to change without notice.

Palazzani Industrie S.p.A.
Via del Pavione, 4 - 25050 - Paderno F.C. (BS) - Italy
Tel. (+39) 0306857073
info@palazzani.it
www.palazzani.it

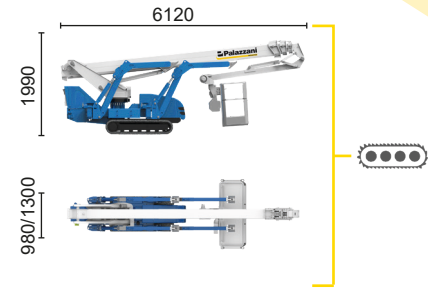


HYBRID²

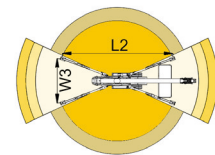
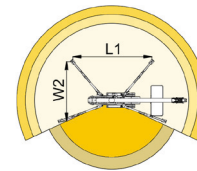
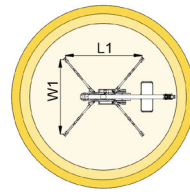
-  Diesel
14,7 kW
-  Single-phase
Electric motor
230VAC - 5,5 kW
-  Lithium iron
phosphate battery
LiFePO4
48V - 210Ah




*optional






9,9 m	11,6 m	12,8 m	7,3 m	12,2 m	13,2 m	7,3 m			
330 kg*	230 kg	120 kg	120/230 kg	230 kg	120 kg	230/120 kg			
L1	L2	W1	W2	W3	L1	L2	W1	W2	W3
4927 mm	6436 mm	4791 mm	3828 mm	2865 mm	4927 mm	6436 mm	4791 mm	3828 mm	2865 mm



TSJ 27/C  27 m 13,2 m 330 kg* 660° 180x70 cm 90°+80° 2,86-4,79 m 44% 42% 1,2 km/h 4950 kg 29 kN 2,1 kN/m2 4,49 kN/m2

Available power options:

-  **BI-ENERGY** (DIESEL+AC)
-  **ECO** (AC+BATTERY)
-  **HYBRID²** (DIESEL+AC+BATTERY)

Characteristics and technical data are informative only and subjected to change without notice.


Palazzani Industrie S.p.A.
Via del Pavione, 4 - 25050 - Paderno F.C. (BS) - Italy
Tel. (+39) 0306857073
info@palazzani.it
www.palazzani.it





NC 826 A 22

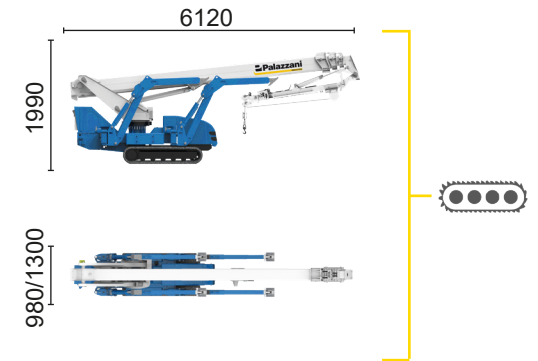
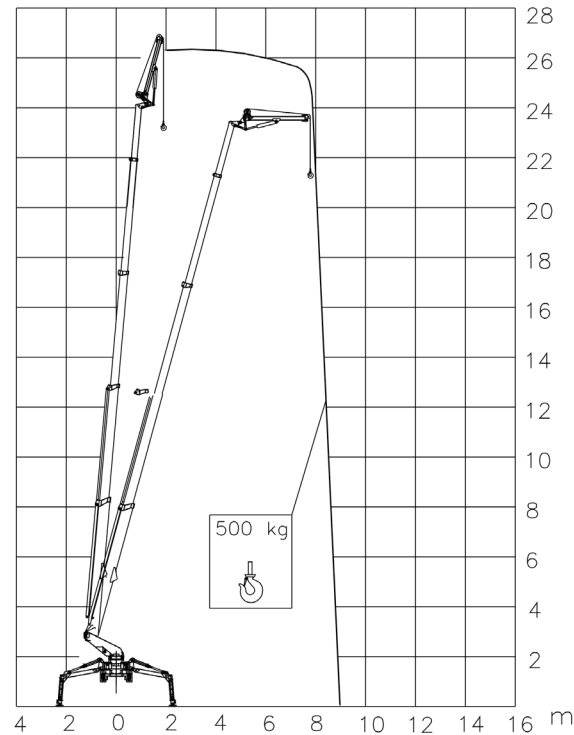



HYBRID²

 Diesel
14,7 kW




 Single-phase
Electric motor
230VAC - 5,5kW

 Lithium iron
phosphate battery
LiFePO4
48V - 210Ah



TSJ 27/C  25,5 m 9 m 500 kg 660° 180x70 cm 90°+80° 2,86-4,79 m 44% 42% 1,2 km/h 4950 kg 29 kN 2,1 kN/m² 4,49 kN/m²

Available power options:

-  **BI-ENERGY** (DIESEL+AC)
-  **ECO** (AC+BATTERY)
-  **HYBRID²** (DIESEL+AC+BATTERY)

Characteristics and technical data are informative only and subjected to change without notice.

Palazzani Industrie S.p.A.
Via del Pavione, 4 - 25050 - Paderno F.C. (BS) - Italy
Tel. (+39) 0306857073
info@palazzani.it
www.palazzani.it

