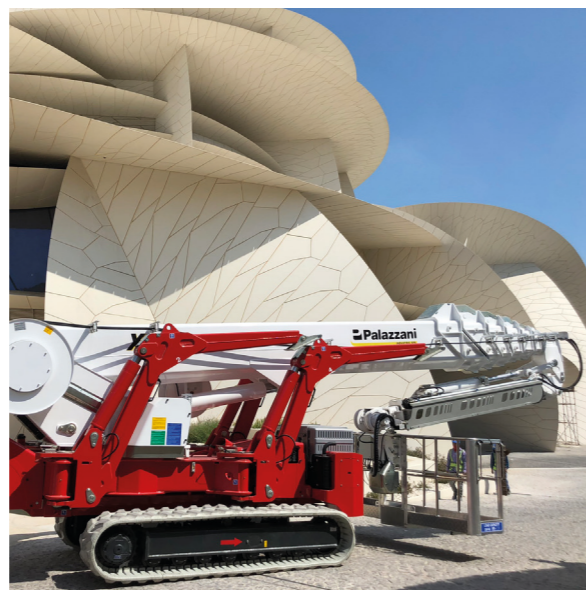






With Us, You can

**HIGH  
GREEN  
SAFE**



- 
**52 m**
- 
**19,5 m**
- 
**400 kg\***  
\*optional
- 
**Bi-energy**
- 
**Crawlers**
- 
**Wheels**





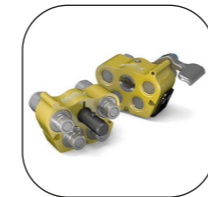
**STANDARD EQUIPMENT**

- Available power options: Bi-energy (Diesel + AC)
- Emergency electropump
- Pistons hydraulic pump at variable displacement for fast and sharp movements and consumption savings. CANBUS distributor + CANBUS electronics
- "Retrun to home" function
- Hydr. steering and transmission on rubber tracks at variable width
- Independent outriggers rotating on 2 different positions
- Automatic set-up with self-levelling
- Turntable rotation at 660°
- Steel made telescopic boom + telescopic jib
- Removable aluminium alloy aerial cage 240x70x110cm, with hydraulic rotation 90° + 80°
- "Area manager" limiting device for safe working load 120 and 230kg
- Radio control at the ground + electric control at the cage
- 230VAC electric plug on the cage
- Air \ water supplementary line
- Inter-phonics communication system
- PalSystem with touchscreen monitor for diagnostics and monitoring of operating parameters
- CE Mark homologation certificates, manuals, stickers and spares book in English language



**HYDRAULIC WINCH 500 KG**

The winch, replacing the basket, allows to transform the Spider lift in Spider crane with a maximum lifting capacity of 500 kg. It is supplied with a special mobile support for the basket disassembled.



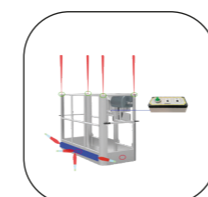
**QUICK PIPES COUPLING KIT FOR HYDRAULIC WINCH 500 KG**

Coupling system and quick release of the hydraulic winch to accelerate and speed up the replacement between basket and winch, reducing significantly the machine downtime.



**PROTECTION OF PRUNERS**

Covers kit in iron for delicate parts of the machine such as cylinders stems, valves and reels to protect against branches or other materials falling from above.



**BASKET ANTI-COLLISION KIT**

The laser sensors are positioned at the four corners of the basket and monitor the distance between the operator and any vertical obstacles. Ultrasonic sensors check the presence of any obstacles around the perimeter.



**NON-MARKING TRACKS**

white rubber, ideal to operate indoor and/ or on delicate floors



**PEDAL TO THE CAGE**

Safety pedal to operate the movements from the cage.



**CASTORS UNDER THE CAGE**

4 wheels mounted under the basket for easily moving it when dismounted.



**TOUCHSCREEN MONITOR IN THE CAGE**

Installed on the cage control panel, providing the operator with all detailed and salient information of the aerial working platform he needs during aerial work.



**KIT PALCONNECT**

Remote connection service with the aerial platform that allows the user to monitor the key parameters of use of the machine and intervene with some of them.



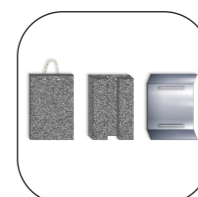
**3<sup>rd</sup> WORKING AREA**

Work area with an increased load, to have the possibility to work with 400 kg of load in the basket



**CUSTOMIZED COLOURS**

Possibility to customize the colours of the tracked lift with different RAL according to the client's corporate livery



**PADS FOR OUTRIGGERS**

Different type of pads to distribute the load of the stabilizers on the ground and have greater stability of the machine.



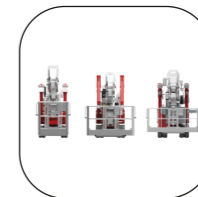
**ELECTRIC GENERATOR**

230VCA single-phase, powered by the diesel engine, connected to an electrical socket in the cage, for the use of electrical tools during aerial working



**ANEMOMETER**

device for measuring the wind, with an acoustic warning of the wind max speed allowed for aerial working



**CAGES OF DIFFERENT SIZES**

Different sizes aluminium cages for one man, or majored to accommodate more people or bulky equipment.



**LED LIGHT**

One or more additional led headlights installed on the basket or on the boom.



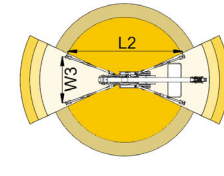
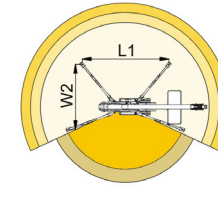
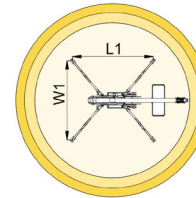
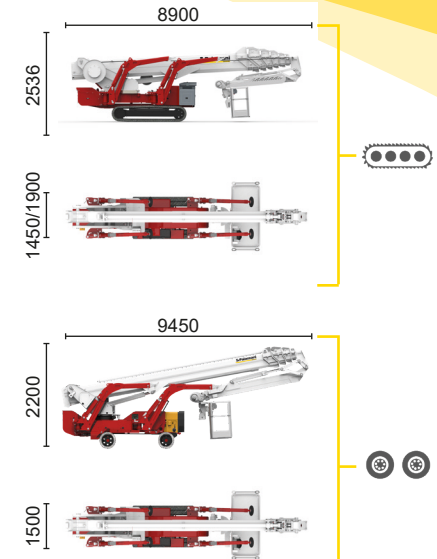
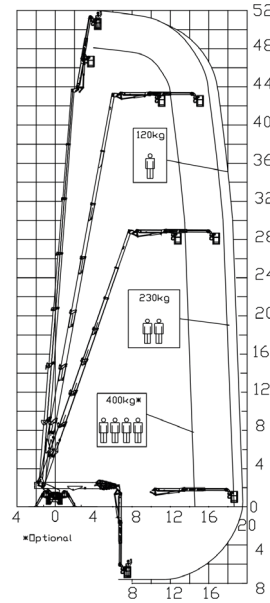
**BI-ENERGY**

---

Diesel  
32,5 kW

---

Single-phase  
Electric motor  
230VAC - 2,2 kW



14,5 m	18,5 m	19,5 m	12,5 m	16,5 m	L1	L2	W1	W2	W3
400* kg	230 kg	120 kg	400* kg	120/230 kg	6460 mm	7190 mm	5170 mm	4655 mm	4130 mm

XTJ 52+/C		52 m	19,5 m	400 kg*	660°	240x70 cm	90°+80°	4,13-5,17 m	16%	42%	2 km/h	14980 kg	95 kN	4,49 kN/m <sup>2</sup>	7,01 kN/m <sup>2</sup>
XTJ 52+/R		52 m	19,5 m	400 kg*	660°	240x70 cm	90°+80°	4,13-5,17 m	16%	21%	1,2 km/h	13000 kg	95 kN	3,89 kN/m <sup>2</sup>	7,64 kN/m <sup>2</sup>

Available power options:

**BI-ENERGY** (DIESEL+AC)


Characteristics and technical data are informative only and subjected to change without notice.


Palazzani Industrie S.p.A.  
Via del Pavione, 4 - 25050 - Paderno F.C. (BS) - Italy  
Tel. (+39) 0306857073  
info@palazzani.it  
www.palazzani.it

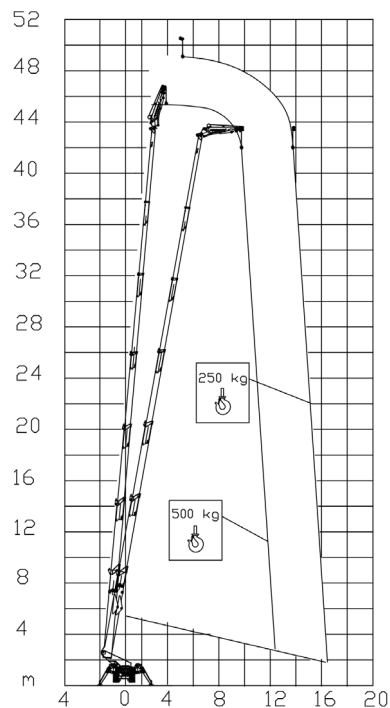




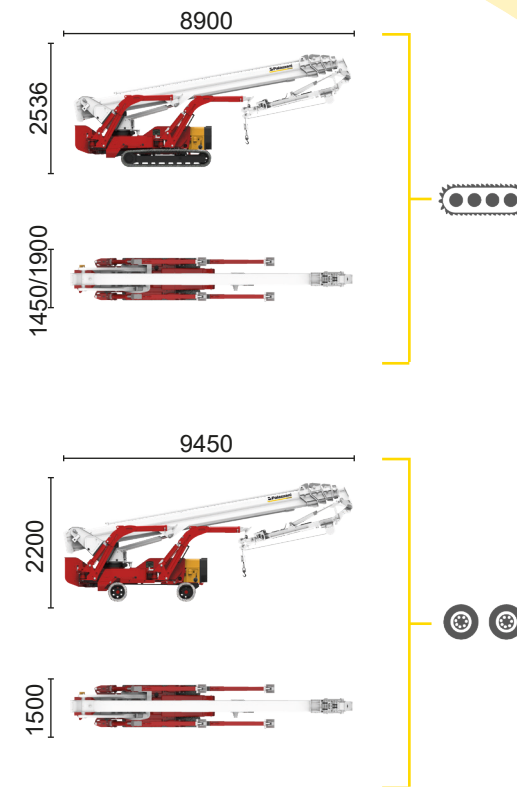
**BI-ENERGY**



 Diesel  
32,5 kW

 Single-phase  
Electric motor  
230VAC - 2,2 kW



500 kg	250 kg
12,5 m	16,5 m



XTJ 52+/C		51 m	16,5 m	500 kg	660°	240x70 cm	90°+80°	4,13-5,17 m	16%	42%	2 km/h	14980 kg	95 kN	4,49 kN/m <sup>2</sup>	7,01 kN/m <sup>2</sup>
XTJ 52+/R		51 m	16,5 m	500 kg	660°	240x70 cm	90°+80°	4,13-5,17 m	16%	21%	1,2 km/h	13000 kg	95 kN	3,89 kN/m <sup>2</sup>	7,64 kN/m <sup>2</sup>

Available power options:

**BI-ENERGY** (DIESEL+AC)

Characteristics and technical data are informative only and subjected to change without notice.

Palazzani Industrie S.p.A.

Via del Pavione, 4 - 25050 - Paderno F.C. (BS) - Italy

Tel. (+39) 0306857073

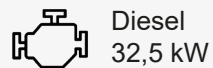
info@palazzani.it

www.palazzani.it





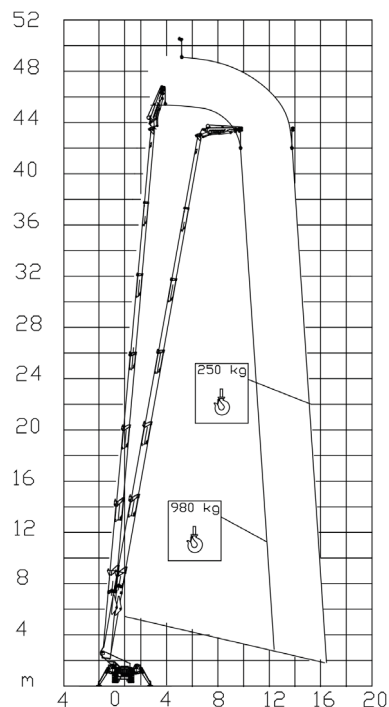
**BI-ENERGY**



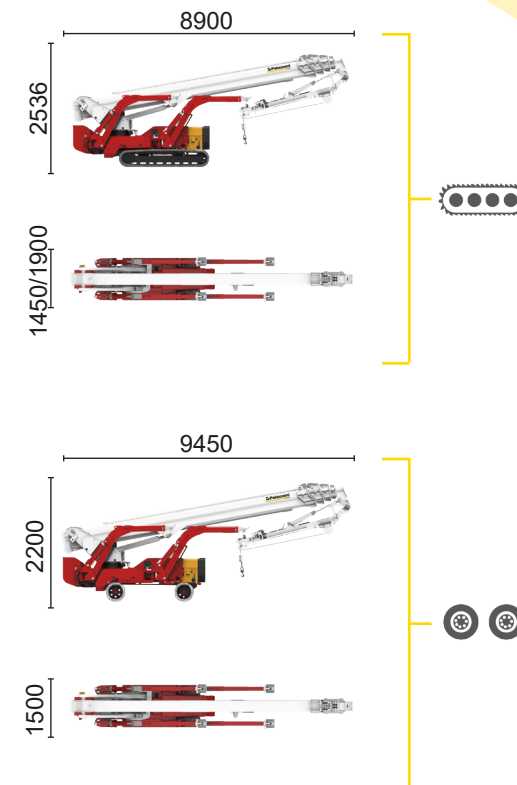
Diesel  
32,5 kW



Single-phase  
Electric motor  
230VAC - 2,2 kW



980 kg	250 kg
12,5 m	16,5 m



XTJ 52+/C		51 m	16,5 m	980 kg	660°	240x70 cm	90°+80°	4,13-5,17 m	16%	42%	2 km/h	14980 kg	95 kN	4,49 kN/m <sup>2</sup>	7,01 kN/m <sup>2</sup>
XTJ 52+/R		51 m	16,5 m	980 kg	660°	240x70 cm	90°+80°	4,13-5,17 m	16%	21%	1,2 km/h	13000 kg	95 kN	3,89 kN/m <sup>2</sup>	7,64 kN/m <sup>2</sup>

Available power options:

**BI-ENERGY** (DIESEL+AC)

Characteristics and technical data are informative only and subjected to change without notice.

Palazzani Industrie S.p.A.

Via del Pavione, 4 - 25050 - Paderno F.C. (BS) - Italy

Tel. (+39) 0306857073

info@palazzani.it

www.palazzani.it

